



Niguel Shores Revetment Restoration Project



Community Meeting | January 10, 2024



WELCOME – THANK YOU FOR HOSTING US!

Getting you started: Guidelines for today's meeting

Your Presenters

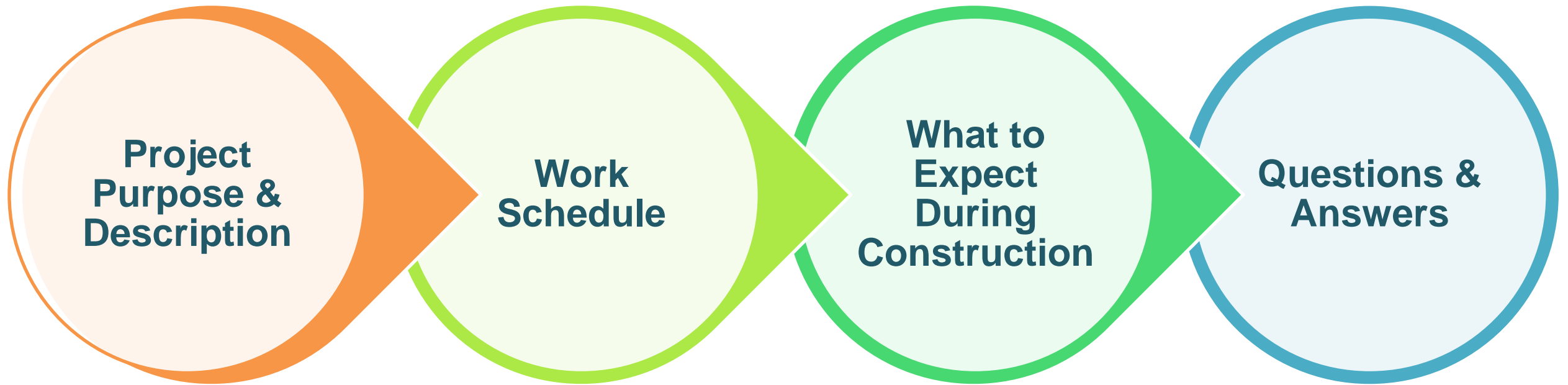


Robert Sanchez
Project
Management

Guidelines for today's meeting

- 1 Today's presenters will move through various information slides
- 2 There will be a Question & Answer period at the end of the presentation

WHY WE ARE HERE TODAY



**BACKGROUND +
DESCRIPTION**



PROJECT LOCATION



PROJECT BACKGROUND

1960s: Construction of the revetment

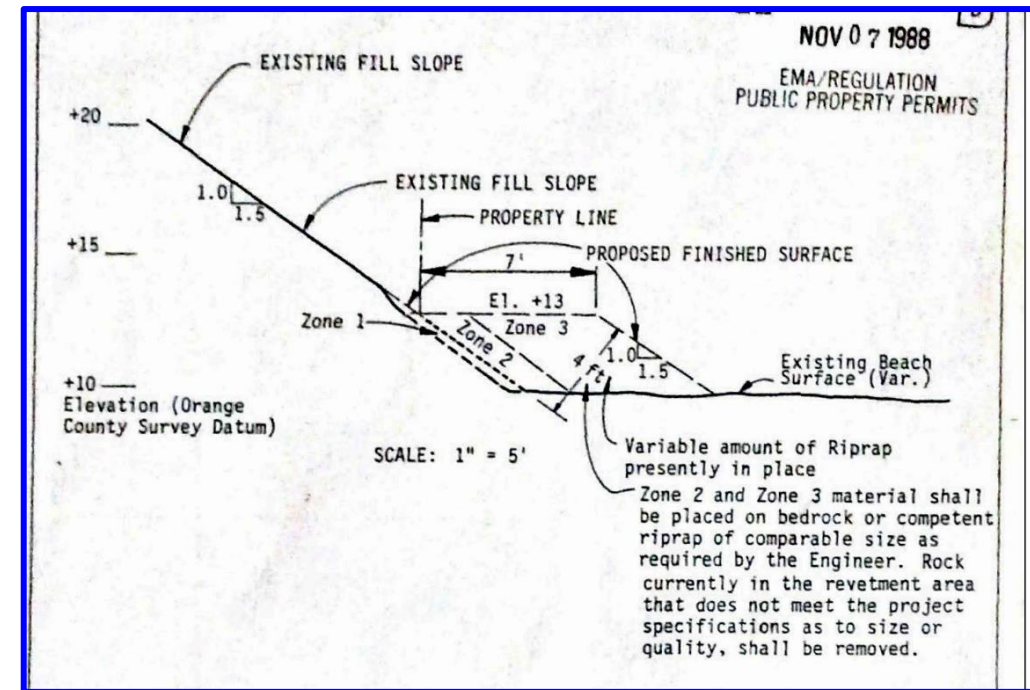
1977: Landslide takes place

1978: Heavy rain caused extensive damage to six residential lots and a segment of the Breakers Isle roadway

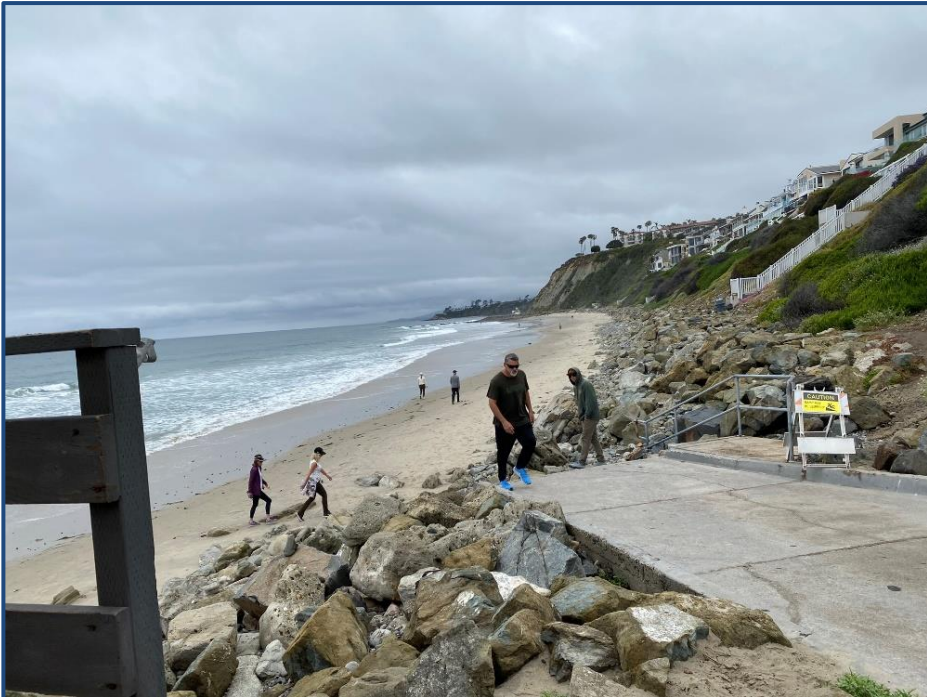
2022: California Coastal Commission approved a Coastal Development Permit (CDP) to restore the revetment consistent with a repair plan approved in 1989 (shown to the right)

2023: California Coastal Commission issued CDP

ORIGINAL REVETMENT DESIGN



Current Conditions

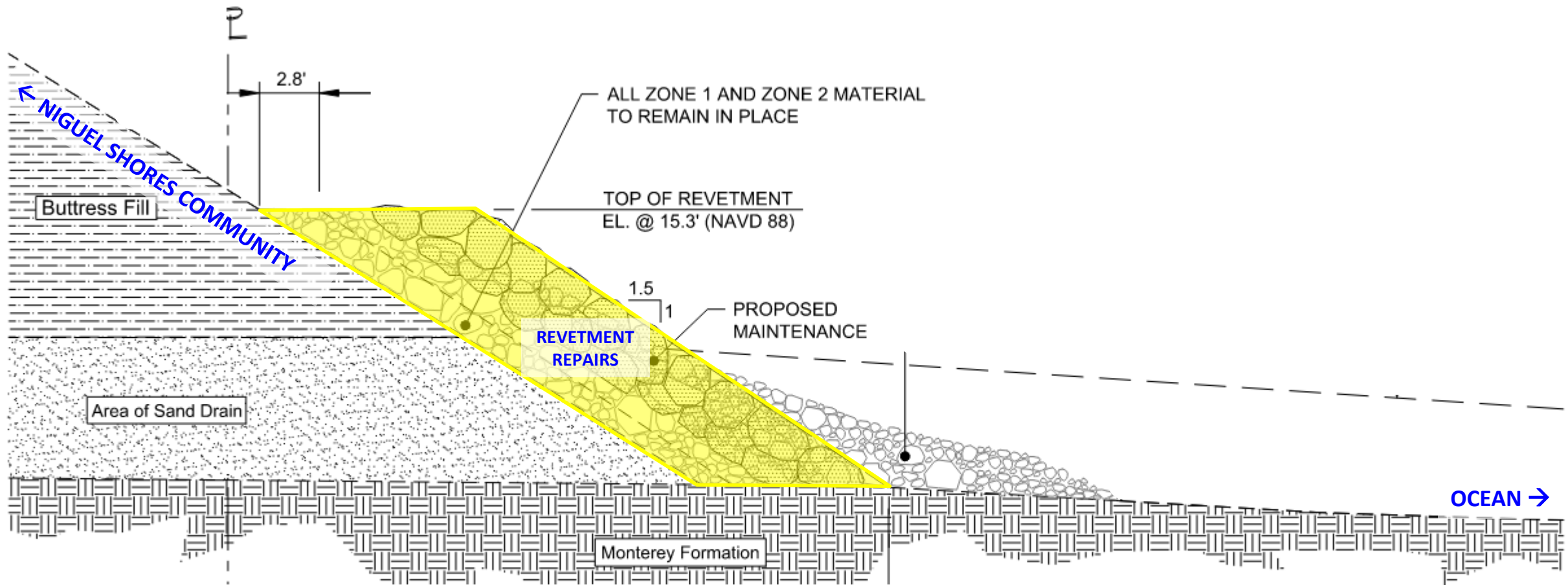


PROJECT COMPONENTS

- 1 Import 1,000 tons of larger armour rock (1.0-1.5 ton)**
- 2 Restore the existing revetment (in 100-ft sections)**
- 3 Repair the existing access ramps**
- 4 Repair the existing public, concrete beach stairs**

PROJECT IMPROVEMENTS

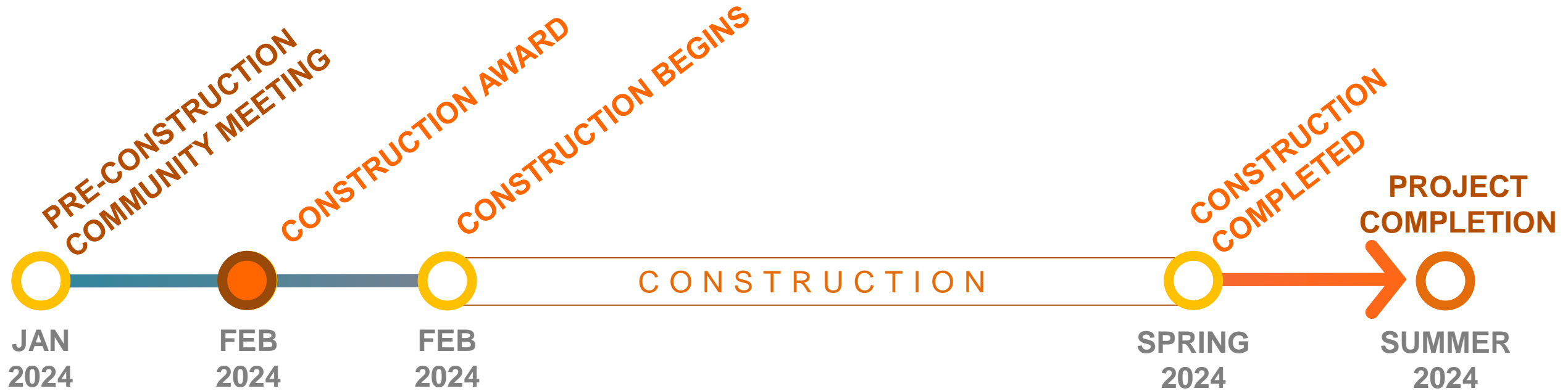
Maintain Public Safety and Access



PROJECT SCHEDULE



PROJECT SCHEDULE



PROJECT TIMELINE

WORKING DAYS, HOURS & DURATION

Working Days: Monday – Friday *(excluding holidays)*

Working Hours: 7:30 a.m. – 5:00 p.m.

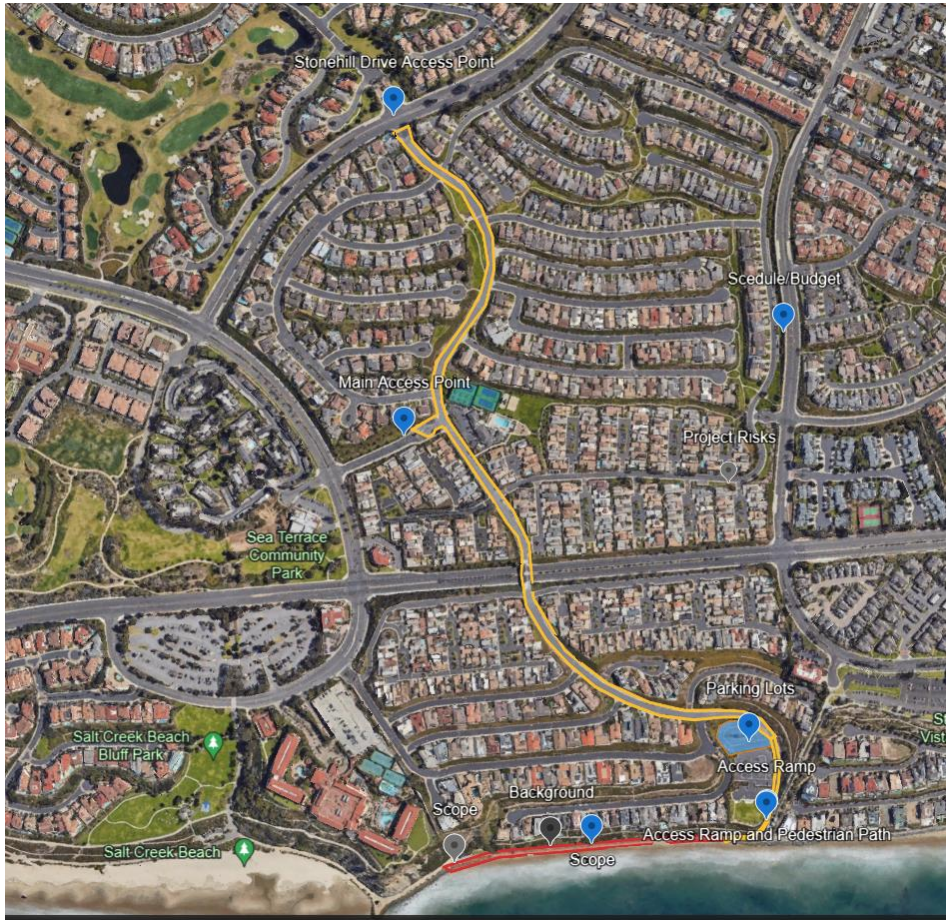
Construction Duration: Feb 2024 – May 2024

Schedule subject to change due to weather, tidal conditions and other factors

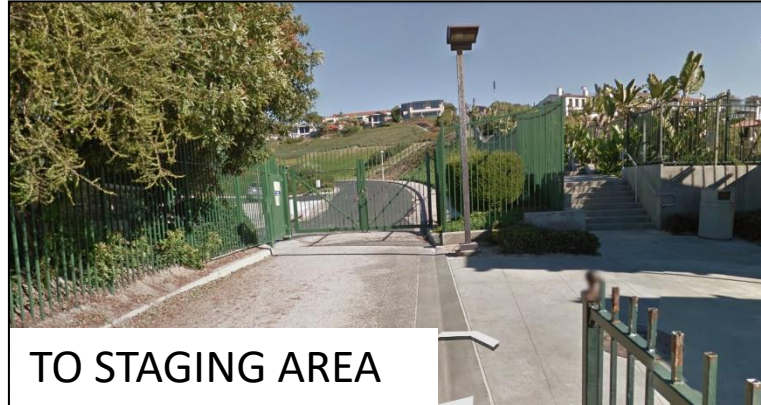
WHAT TO EXPECT DURING CONSTRUCTION



WHAT TO EXPECT DURING CONSTRUCTION



Construction Access, Hauling Routes



Equipment being used includes excavator, loader, dump truck, and forklift



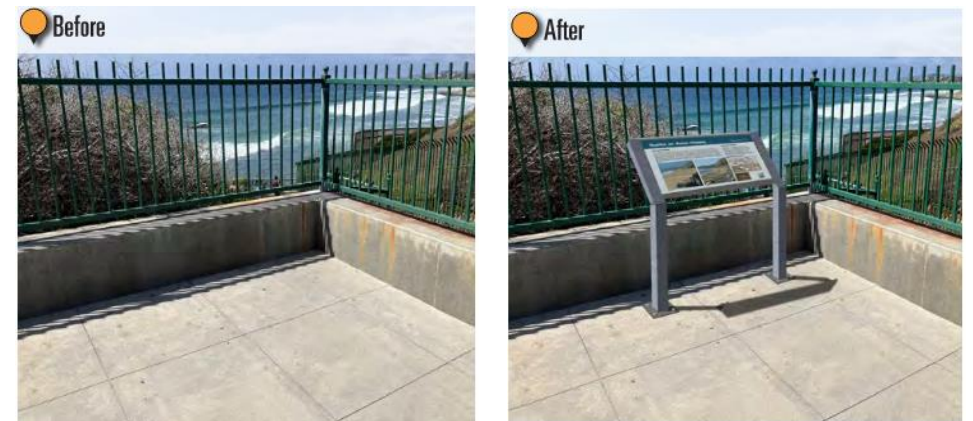
WHAT TO EXPECT DURING CONSTRUCTION

Environmental Monitoring

- Pre-construction biological surveys
- Water quality monitoring
- Biological monitoring during bird nesting season
- Grunion monitoring
- Revetment monitoring
- Shore zone monitoring

Project Signage

- Updated Project signage will be implemented throughout construction



CONTACT & PROJECT UPDATES

Website: www.ocparks.com/news/niguel-shores-rock-revetment-repair-and-maintenance-project

E-mail: ProjectInfo@ocpw.ocgov.com

Phone: 714-245-4500

Social Media:



[Facebook.com/OCPublicWorks](https://www.facebook.com/OCPublicWorks)



[Twitter.com/OCPublicWorks](https://twitter.com/OCPublicWorks)



[Instagram #OCPublicWorks](https://www.instagram.com/OCPublicWorks)



[YouTube #OCPublicWorks](https://www.youtube.com/OCPublicWorks)



QUESTIONS & ANSWERS





THANK YOU

