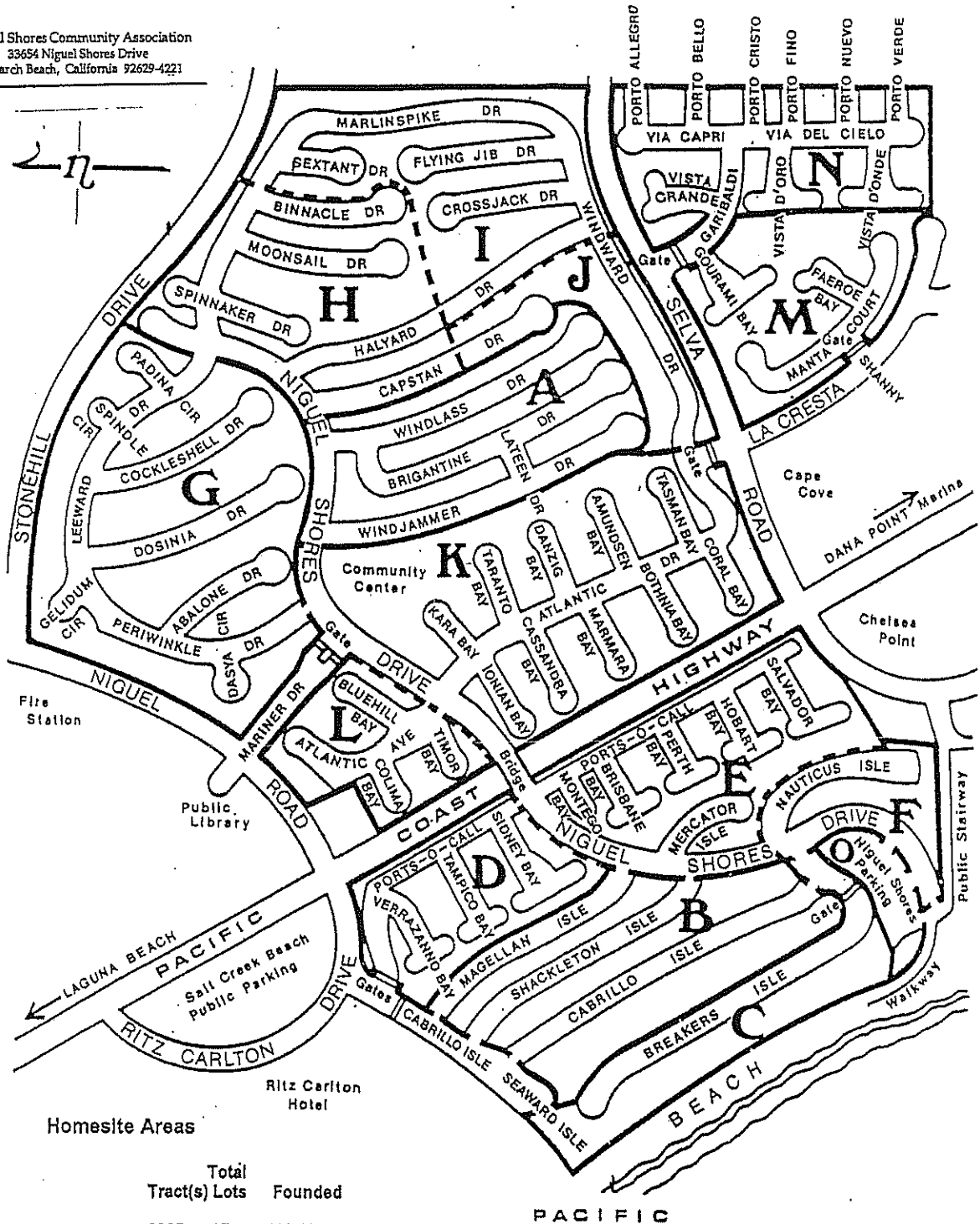


Miscellany



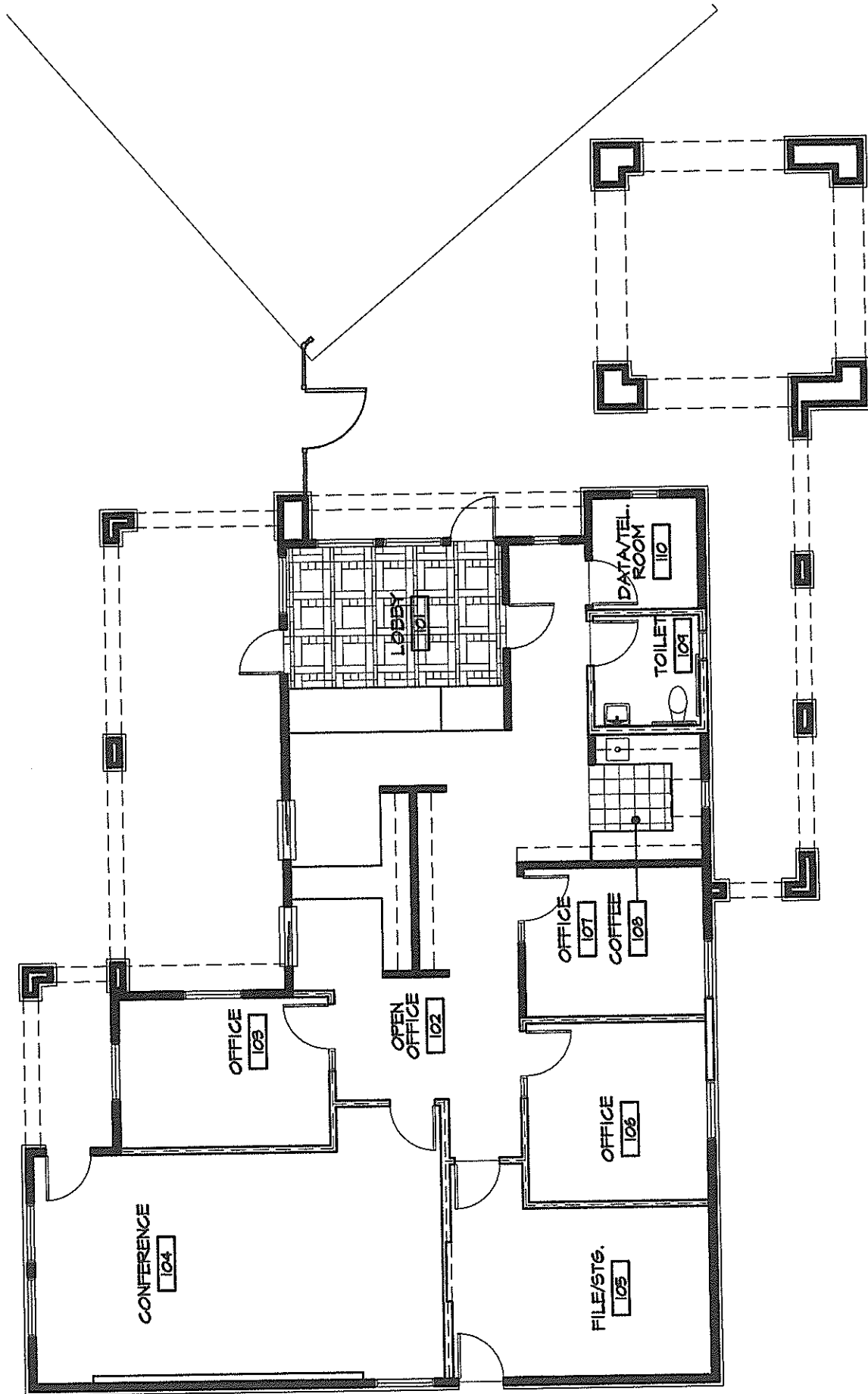


Homesite Areas

Areas	Tract(s)	Total Lots	Founded
A Broadmoor Homes		6935 67	12/01/69
B Custom Homes		7156 56	01/11/70
C Breakers Isle		6988 23	08/11/70
D Shores Garden Homes	}	6883	01/26/71
E Shores Garden Homes		7203	08/15/71
F Shores Garden Homes		7573	07/20/72
G Berkus Homes		7447 105	01/05/72
H Sea Terrace Townhomes I	}	7515	01/05/72
I Sea Terrace Townhomes I		6884	08/02/72
J Sea Terrace Townhomes I		6881	11/01/72
K Atlantic Garden Homes	}	6782	05/02/72
Atlantic Garden Homes		8038	11/20/72
M Sea Terrace Townhomes II		8602 77	08/05/74
N Villas		8098 75	10/18/76
O Niguel Shores Parking		6950	
TOTAL		960	

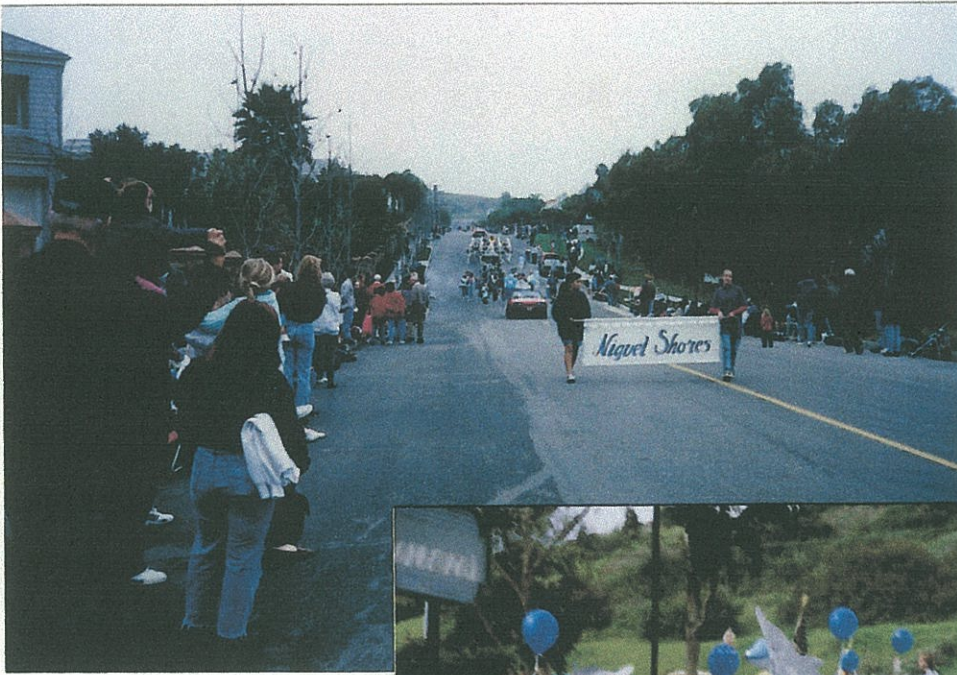
Statistics and History

Niguel Shores is made up of fourteen tracts of land in nine areas totaling 960 homesites. A master document known as the Declaration of Establishment of Protective Conditions, Covenants, and Restrictions (CC&Rs) was introduced with the first developed area, Broadmoor Homes, in 1969. In addition, there were "supplementary" CC&R documents prepared for each newly developed tract. Besides the Niguel Shores Community Association there are additional associations for Sea Terrace I and Sea Terrace II which have their own governing documents and boards of directors. Their members are subject to their individual area CC&Rs and the master CC&Rs.





1980's



1996



1993

27 2'93



1995



Aug '97

HOW "THE DOLPHINS" WAS CREATED

One of the Shores' greatest tests of teamwork, imagination and creativity was unveiled on July Fourth when "The Dolphins" was first shown to a crowd of about 400. Today, and for years to come, this beautiful statuary will greet all who enter our community through the main gate.

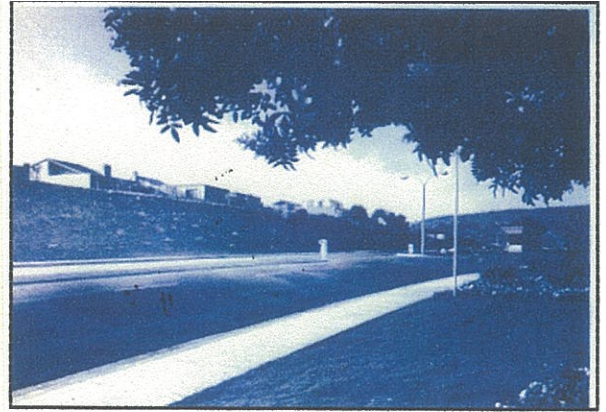
Early in 1996 Jerry Milner, then a member and now president of the NSCA Board asked Frank Turner, the Shores well known sculptor, to aid in improving our existing dolphin topiary. After a viewing trip to Rogers Gardens they decided a stone or metal sculpture would be easier to maintain and be much more attractive as well. Frank agreed to design and make a model for a bronze casting in hopes of finding financing. The project had the enthusiastic support of Rick Foth, chairman of the maintenance committee.

Although the NSCA Board liked the proposal, it determined that financing would need to be done only by voluntary donations. Rick then prevailed upon Jerry Pearl, the community's number one optimist, to head up the search for the estimated \$20,000 needed. Several people committed \$1,000 each and soon 132 other residents came up with additional amounts which exceeded the casting cost.

With financing guaranteed, Frank completed the two dolphins and wave-like base using a dense polyurethane material. The lengthy 9 or 10 - step casting and finishing process was supervised by Frank over a four-month period at the "Moon and Space Art Center" in Escondido.

Rick Foth supervised the delivery and placement of the 600- pound sculpture on its concrete base which was provided by the efforts of resident, Chris Griffitts, and Ed Manriquez, maintenance supervisor.

Our community should feel proud of all the people who contributed their time, talents and money, and especially artist Frank Turner.



Mariner Gate - 1973



Mariner Gate - 2003

10/17/95





Dana Point News
3/3/94

Festival marches on



David Carlson/The News

Members of the Niguel Shores Community Association march in Saturday's Festival of the Whales parade. About 7,500 visitors turned out for the parade and street fair Saturday, and 6,000 people attended Sunday's events, officials report. Dana Wharf Sportfishing said it sold 3,186 whale watching tickets, after selling just 467 on the rainy first weekend last year. For this weekend's events, see page A17.



Festival of Whales Parade—March 1996



Festival of Whales Parade - March, 2003

A whale of a festival



Niguel Shores rowboaters prepare to paddle down Pacific Coast Highway in the Festival of Whales Parade.

<back next>



1993



1995



1995

NIGUEL SHORES IN PARADE

Saturday, March 7, 10 am, about 20 children from Niguel Shores will start out carrying dolphins -- painted cardboard on sticks -- in the Festival of Whales parade in Dana Point. The parade will start at the corner of Blue Lantern and Santa Clara near Cannons Restaurant and head south, then cross over Del Prado and PCH, ending in the La Plaza area.

Leading the group of dolphins will be Dick Luedeke's spiffy '64 Mustang decorated by Patty and Hal Therolf and carrying Niguel Shores logo. Doris and Ed Adams and Betty and John Dickerhoff have already made the dolphins, and Joanne Bucholt will be enlisting all the children who will be wearing water colored T-shirts provided by the Recreation Committee.

See parade flyer attached to this issue for particulars.

8





4th of July Parade in Niguel Shores - 1980



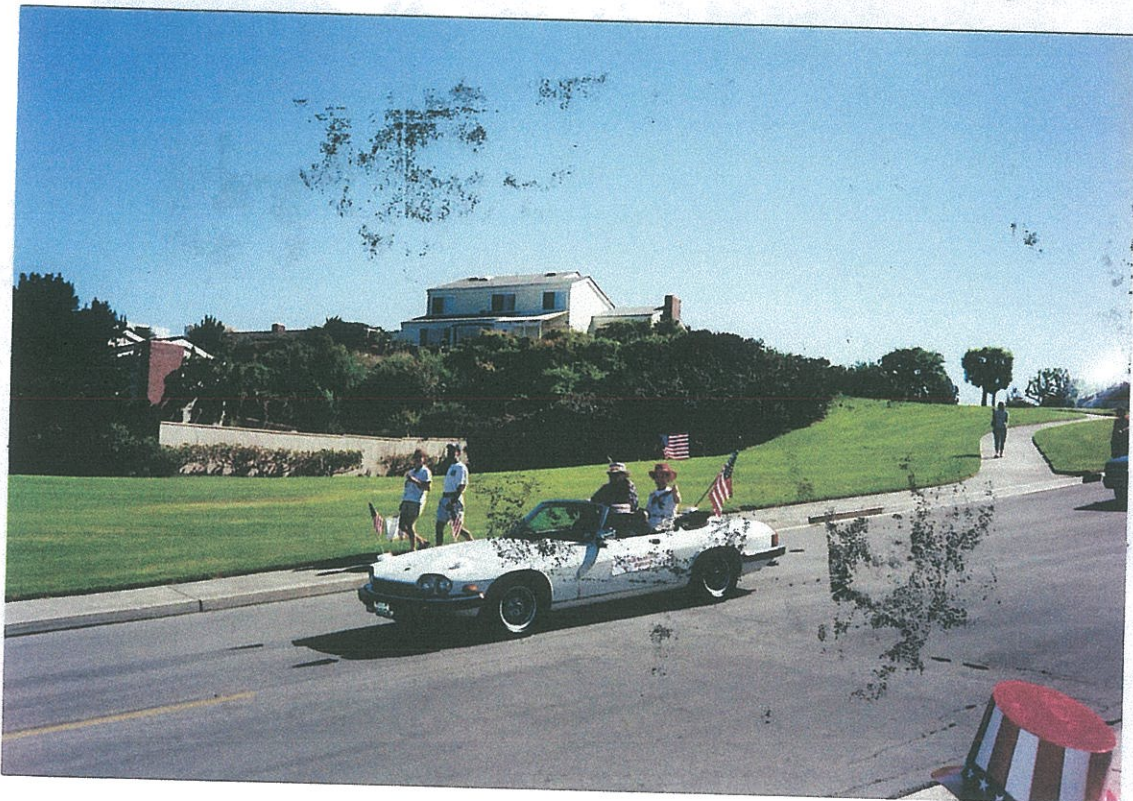
Beach Games at 1978 4th of July Celebration



Early 1980's.



2002



2003



1995



1995