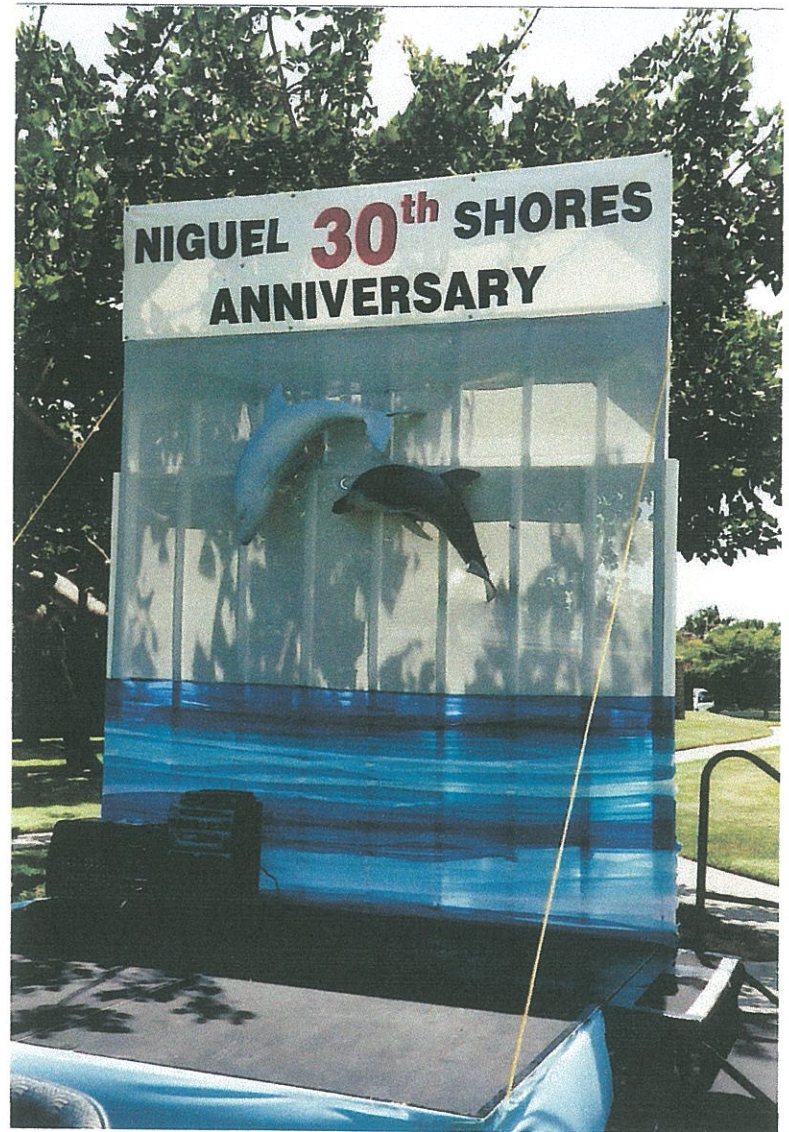
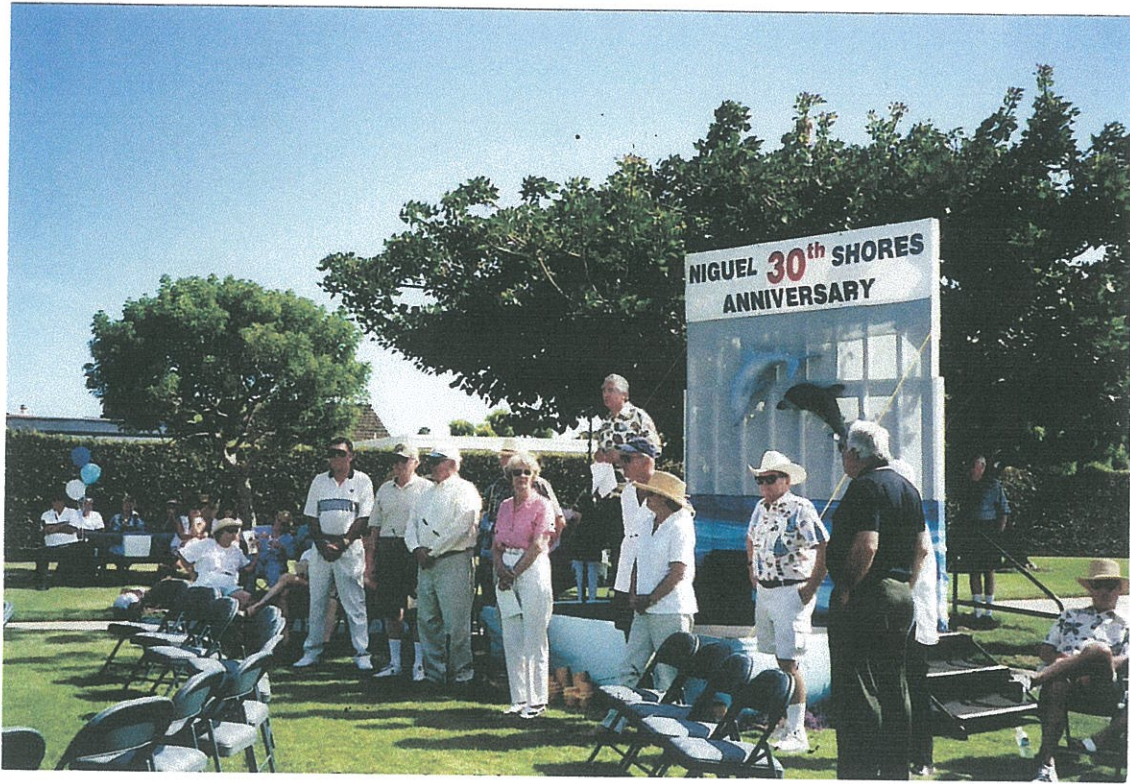


30th Anniversary of the Dedication
of the Community Center at
Niguel Shores - August 2003

Stage backdrop created by Frank
Turner, sculptor of the dolphin
statue at the entrance to Niguel
Shores.

Below at the podium is Bob Borland,
Chairman of the Recreation
Committee and of the Anniversary
Celebration





Arnold Cordova, President of the Board of Directors, presenting his fellow Board Members and Committee Chairmen



Mary Crowl presenting to Pat & Jack Elder a commemorative certificate noting that they are the residents who have lived longer in Niguel Shores than anyone else—since February 1971.



Burr & Sue McKeehan, early residents of Niguel Shores recounting their experiences in the early 1970s.

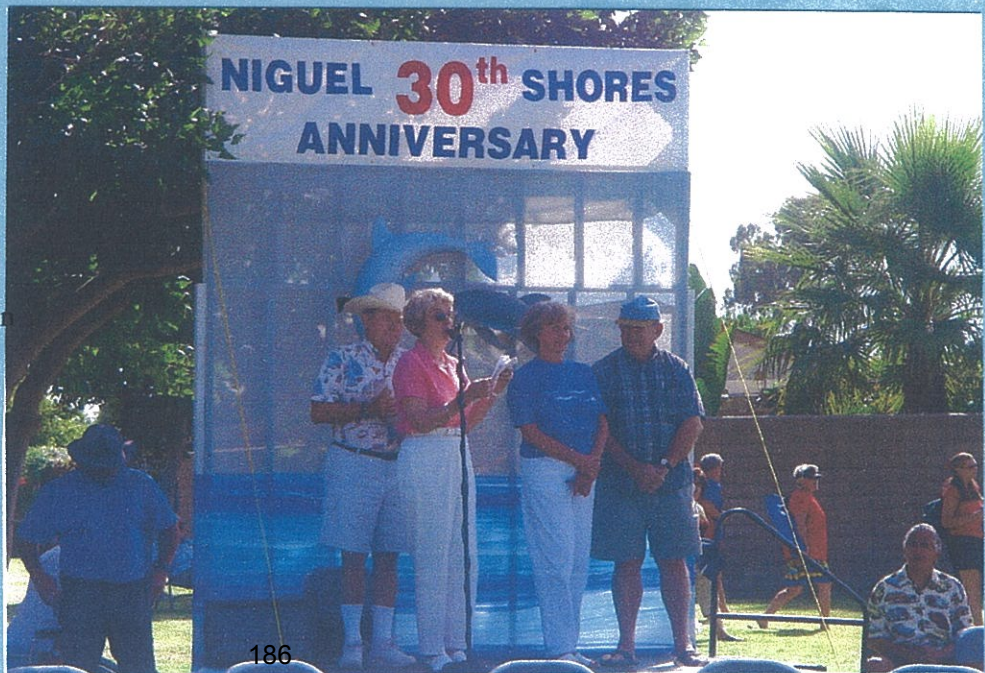


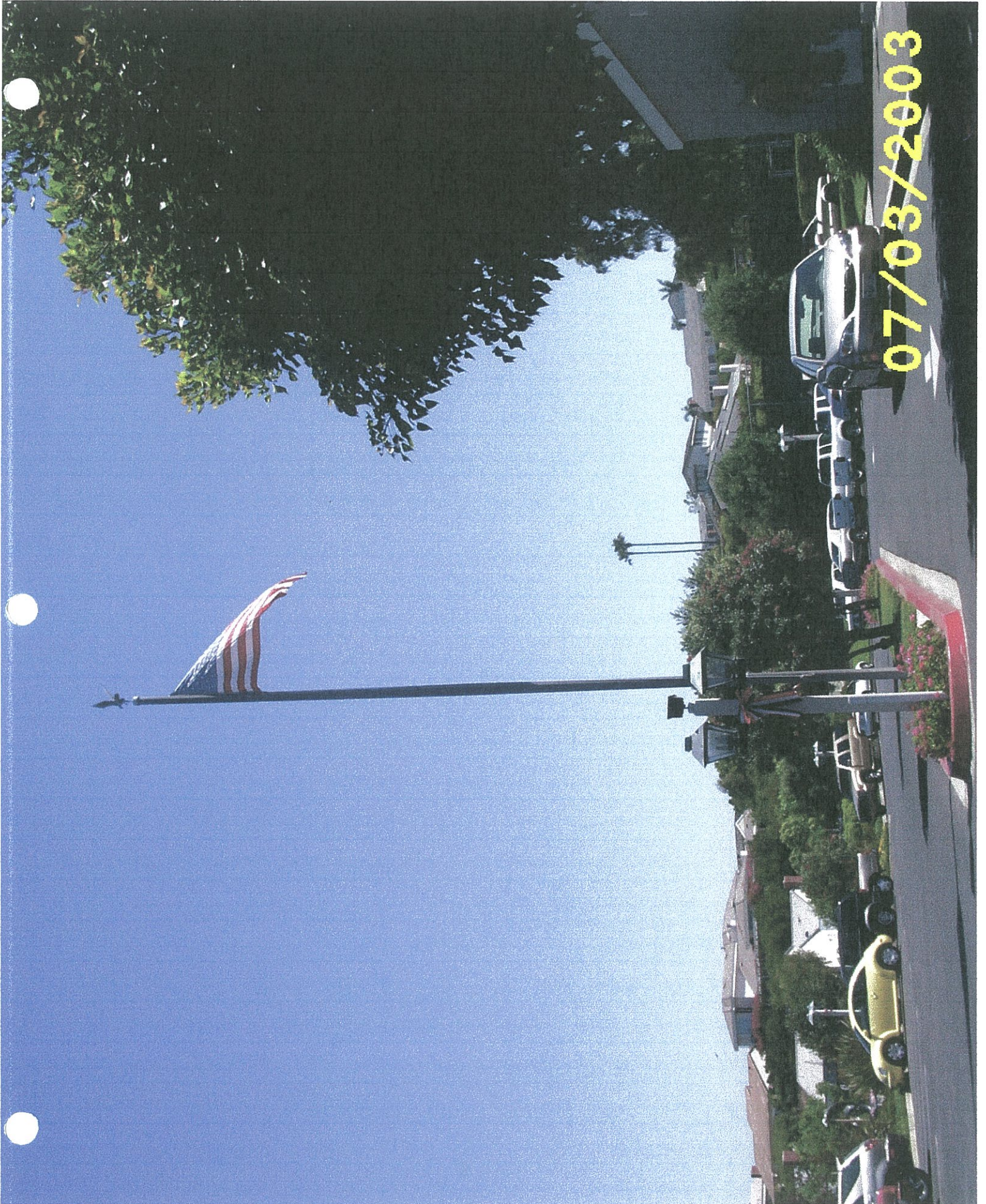
View of the display board of documents recounting the History of Niguel Shores—included were developers' brochures for the different areas with home floor plans and amenities.



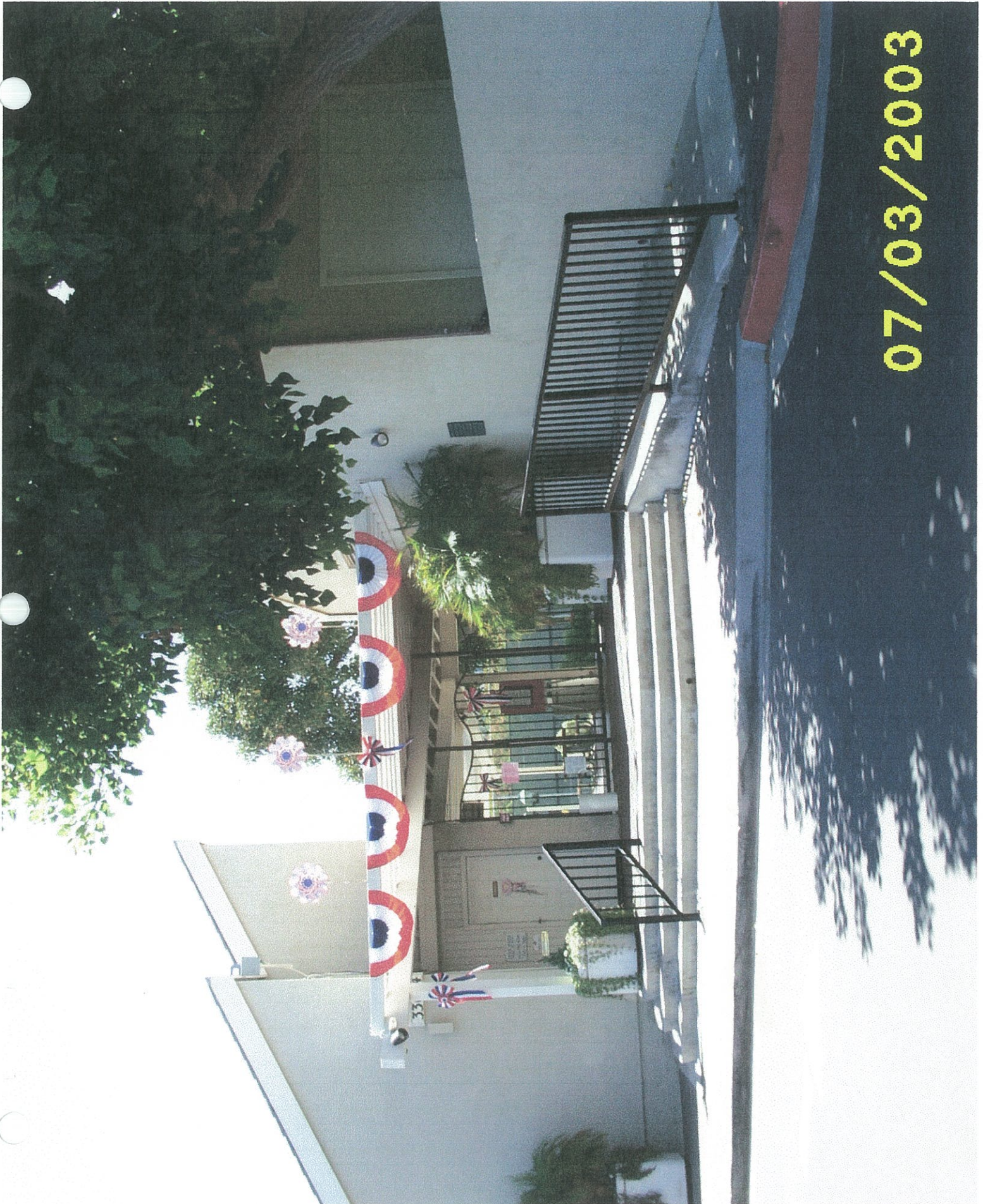
Top photo: Board President, Arnold Cordova, introducing Board Members & Committee Chairs: Left to right: Martin Dedrich, Traffic & Safety Committee Chair, George Evans, ACC Chair, Dick Johns, Jerry Milner, Mary Crowl, Sam Johnson and Dianna Cannariato, Board Members, Bob Borland, Recreation Committee Chair, Janet Mackaig, Landscape Committee Chair, and Dick Mackaig, Finance Committee Chair.

Right; Bob Borland, emcee and Mary Crowl announcing winners Pat & Jack Elder as the earliest residents of Niguel Shores (Feb. 1971)



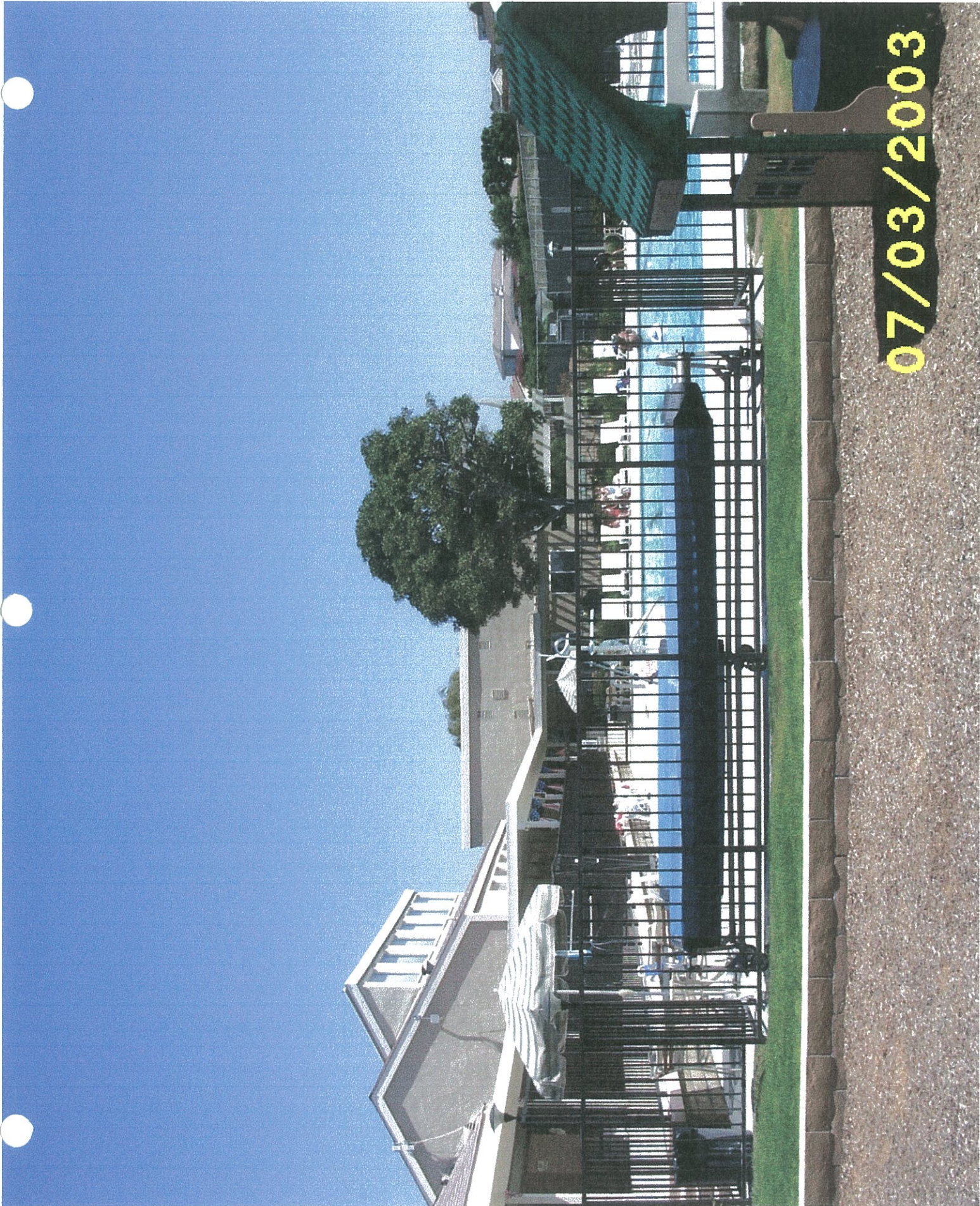








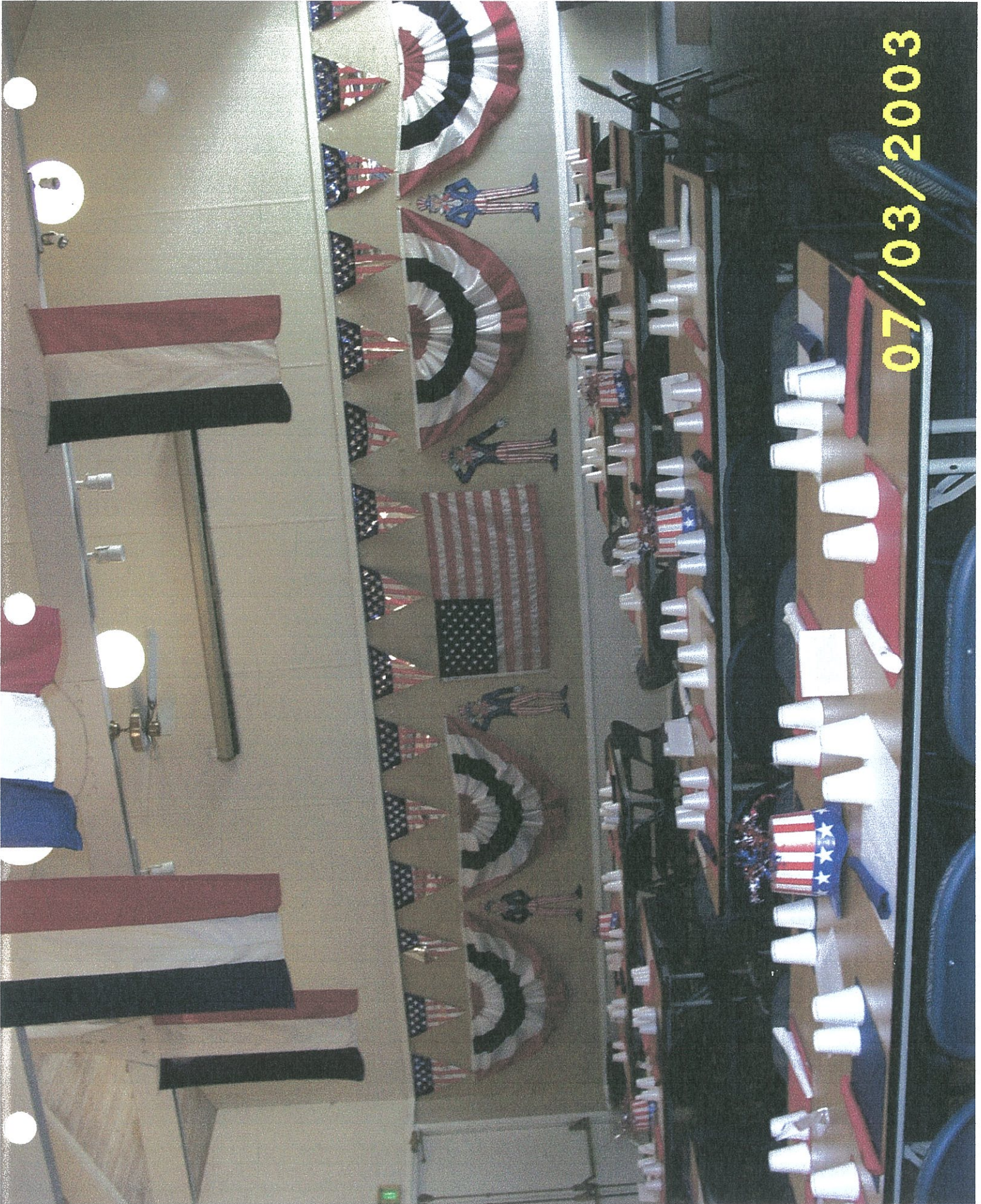
07/03/2003







07/03/2003



07/03/2003

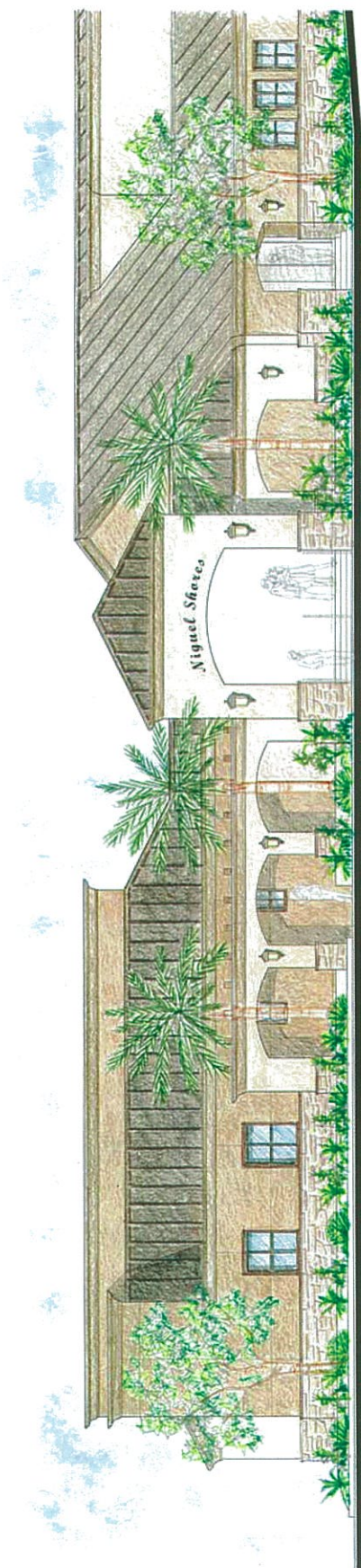


07/03/2003

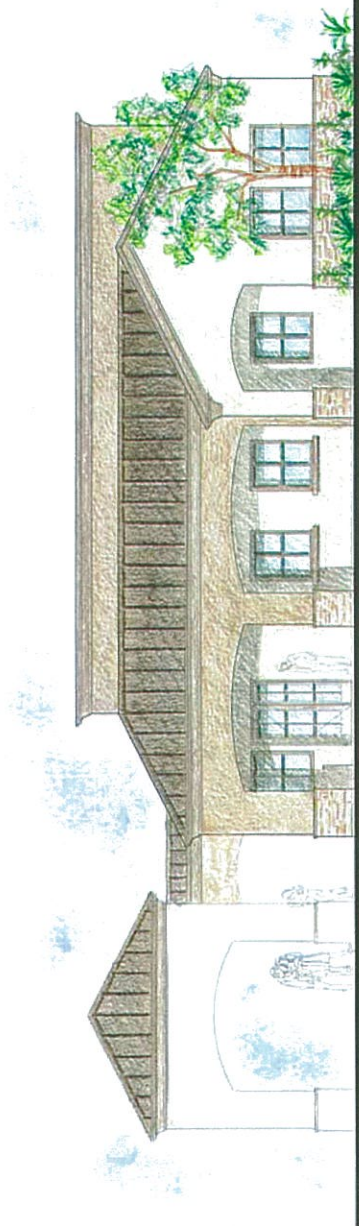








NORTH ELEVATION



SOUTH ELEVATION

NIGUEL SHORES COMMUNITY ASSOCIATION
**COMMUNITY CENTER
 OFFICE BUILDING**
 38654 NIGUEL SHORES DRIVE, DANA POINT, CA

BORDERS ROBERT BORDERS & ASSOCIATES
 ARCHITECTURE - COMMERCIAL INTERIORS
 5030 CAMPUS DRIVE NEWPORT BEACH CA 92660
 949.851.1517 VOICE 949.851.0332 FAX

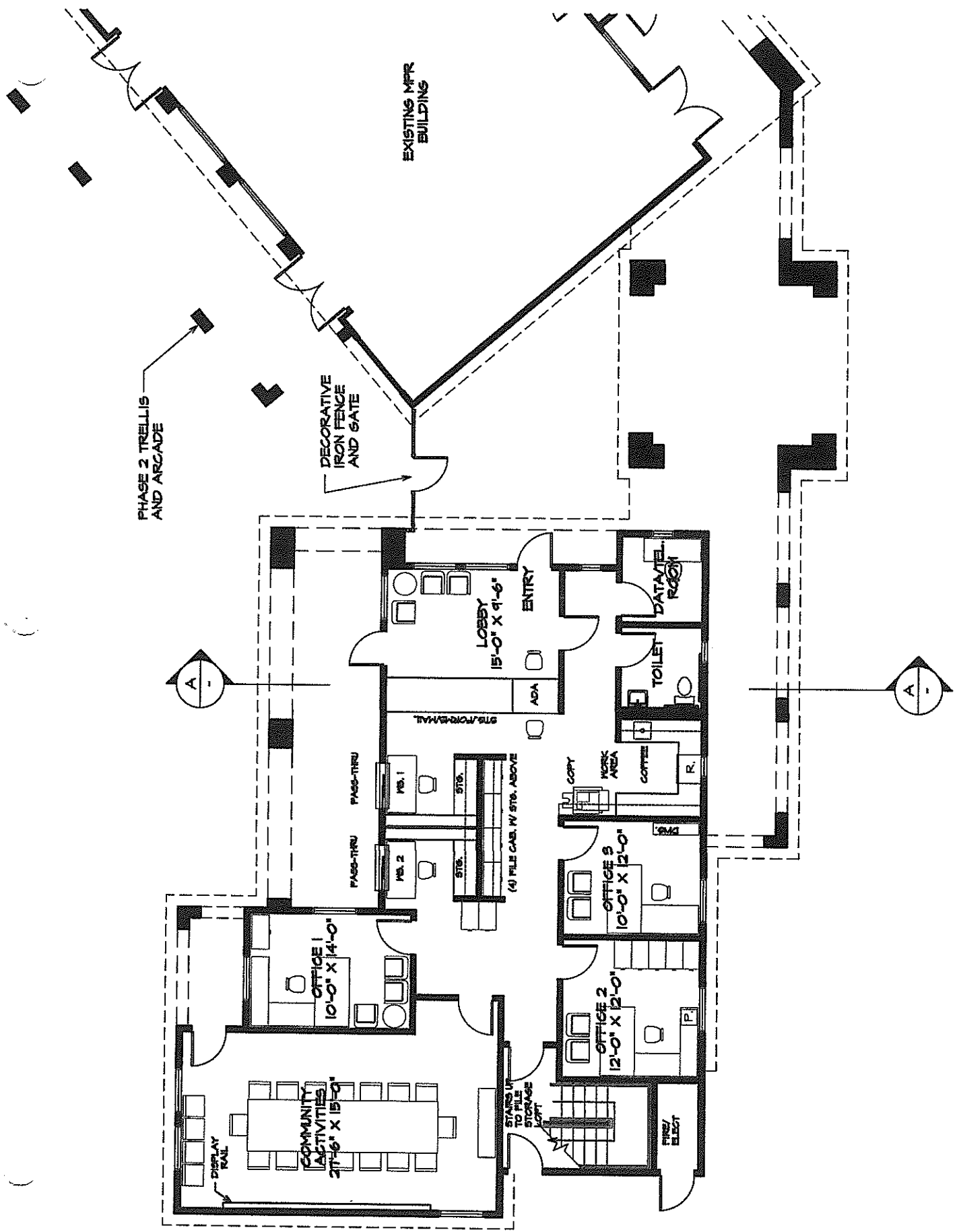
OFFICE
 EXTERIOR
 ELEVATIONS

REVISIONS	BY	DATE

REVISIONS	BY	DATE

DD-3

6/06



FIRST FLOOR PLAN
1.000.000

BEACH BLUFF PARK





Beach Bluff Park walkway & benches



Beach Bluff Park enlarged with new furniture and landscaping 2009

